

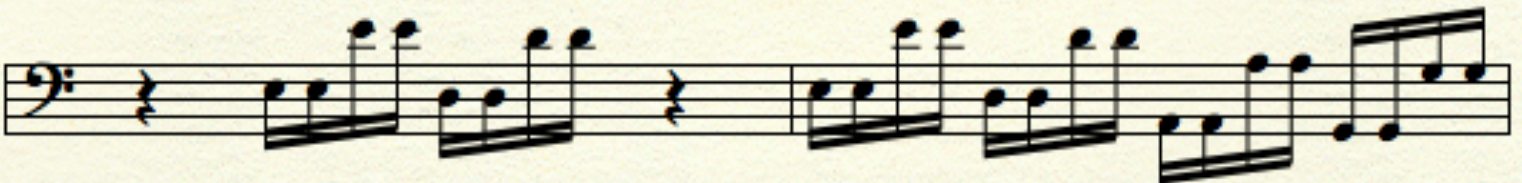
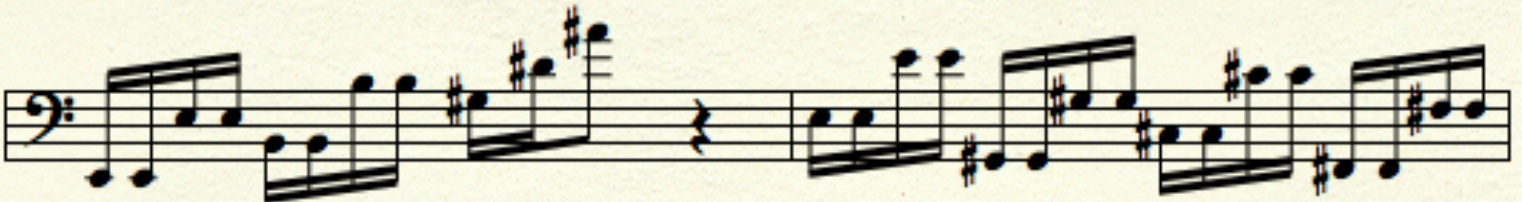
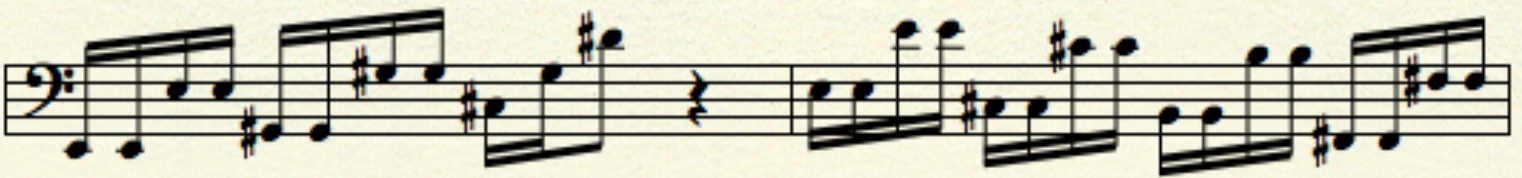
RIVER PEOPLE

Jaco PASTORIUS

□₁₀₅



□_A





B



C



First staff of music in bass clef. It begins with a blue double bar line. The melody consists of eighth notes, with some notes marked with a flat (b). The staff ends with a blue double bar line.

Second staff of music in bass clef. It continues the melody from the first staff, ending with a blue double bar line.

Third staff of music in bass clef. It features a red dashed line above the staff. A green box containing the letter 'D' is positioned above the first measure. The staff ends with a blue double bar line.

Fourth staff of music in bass clef. A green box containing a square symbol is positioned above the second measure. The staff ends with a blue double bar line.

Fifth staff of music in bass clef. It begins with a red double bar line. The staff ends with a blue double bar line.

D ad lib

An empty musical staff in bass clef, consisting of two horizontal lines.